

D-Sub Full Metal Cover, 90° Side Entry, Compression Grommets

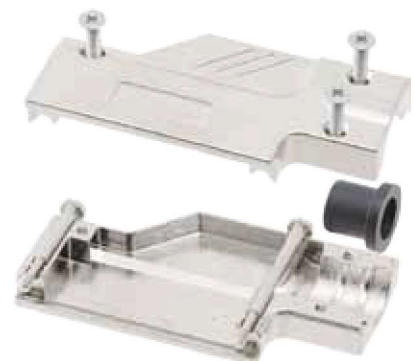
TECHNICAL SPECIFICATIONS

Material: Zinc, Nickel Plated  
 Operating Temperature: -25°C to +90°C  
 Cable Entry: 90° Side Entry  
 Jackscrews: UNC 4-40, M3 on request  
 Cable O.D.: 9-way: Up to 8,1mm  
 15-way: Up to 8,1mm  
 25-way: Up to 11,4mm  
 37-way: Up to 16,5mm  
 50-way: Up to 16,5mm  
 Type of grommets: Compression Inserts

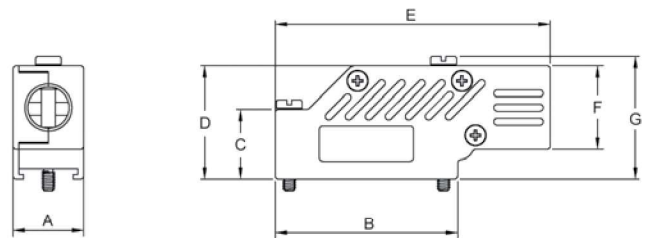
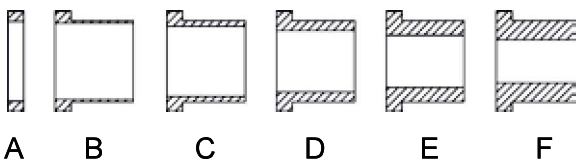


Features:

- Available in sizes 9-15-25-37-50  
 Size 50 on request
- Suitable for any common Sub-D connector
- Re-Openable
- Compression Inserts in Thermoplastic Compound



Compression Insert Sizes:  
(inner diameter)



Size	A	B	C	D	E	F
9/15	8,10	8,00	7,25	6,50	5,30	-
25	11,40	10,40	9,40	7,60	5,80	-
37/50	16,50	15,75	14,50	12,70	10,80	8,90

Size	A	B	C	D	E	F	G
9	15,0	30,8	15,0	24,4	50,8	18,0	26,2
15	15,2	39,4	15,0	24,4	59,3	18,0	26,4
25	15,8	53,3	23,1	34,5	72,4	24,3	35,0
37	15,8	69,9	23,1	40,9	89,7	30,7	42,9
50	18,0	67,1	-	40,9	86,9	30,7	42,9

Ordering information:

Size:	P/N - Kitted:	Product Code:
9-way	1060-0135-01	DCMR09-ULP
15-way	1060-0135-02	DCMR15-ULP
25-way	1060-0135-03	DCMR25-ULP
37-way	1060-0135-04	DCMR37-ULP
50-way	1060-0135-05	DCMR50-ULP



Encitech Connectors AB  
 Rörkullsvägen 4  
 SE-302 41 HALMSTAD, Sweden

Tel: +46-(0)35-15 13 90  
 e-mail: connectors@encitech.com

[www.encitech.com](http://www.encitech.com)