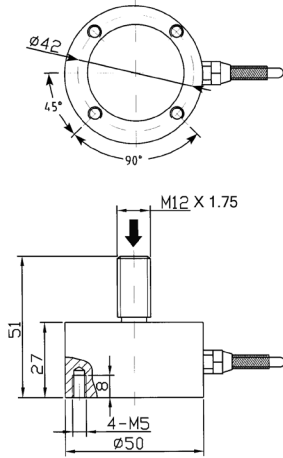


# RSB3 Low Profile Load Cell With Threaded Stud



(With tension adapter TX-RSB3)

## Accuracy Specifications

Accuracy	
Non-linearity	± 0.1% Full Scale
Hysteresis	± 0.5% Full Scale
Non-repeatability	± 0.5% Full Scale

## Load Cell Specifications

Zero Balance	± 2%
Safe Overload	to 120% of capacity (300% Ultimate Overload)
Rated Excitation	5 - 10 VDC
Full Scale Output	1.5 mV/V
Connections	1m Cable
Input Impedance	750 ± 30 Ohm
Output Impedance	700 ± 4 Ohm
Insulation	> 2,000 MΩ
Creep, in 30 min	± 0.05% of Load
Operating Temperature Range	-20°C to 60°C with TARE
Compensated Temperature Range	-10°C to 40°C with TARE
Temperature Effect on Output	0.05% of Full Scale/10°C
Temperature Effect on Zero	0.05% of Full Scale/10°C
Seal Type	IP66

## Wiring Information

Cable Color Code	
Red	+ Excitation
Black	- Excitation
Green	+ Signal
White	- Signal

## Ordering Information

Multiple Load Cell Capacities	
RSB3	Part No.
50 kilogram	RSB3-050M-S
100 kilogram	RSB3-100M-S
200 kilogram	RSB3-200M-S
500 kilogram	RSB3-500M-S

## Calibration Options

*C01	Compression
*C02	Tension
*C03	Universal

## Compatible Accessories

### Recommended Interfaces



USB Interface

1 Channel:  
DI-100U (40 Hz)  
DI-100UHS (250 Hz)  
DI-1000U (60 Hz)  
DI-1000UHS (500 Hz)  
DI-10000UHS-1K (1 KHz)  
DI-10000UHS-10K (50 KHz)

4 Channel:  
DI-400U (40 Hz)  
DI-400UHS (250 Hz)

Wireless Interface

DI-1000ZP  
DI-1000WiFi  
DI-1000BLE

Analog Interface

AI-1000 (0-5 VDC)  
AI-1000CV (0-5 VDC, 4-20 mA)

Touchscreen Display

DS-3000Pro-1 (1 Channel)  
DS-3000Pro-4 (4 Channel)

Rod End

RE-M12-F

Tension Adapter

TX-RSB3

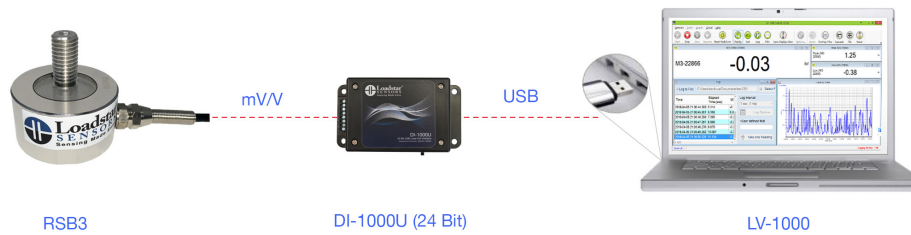
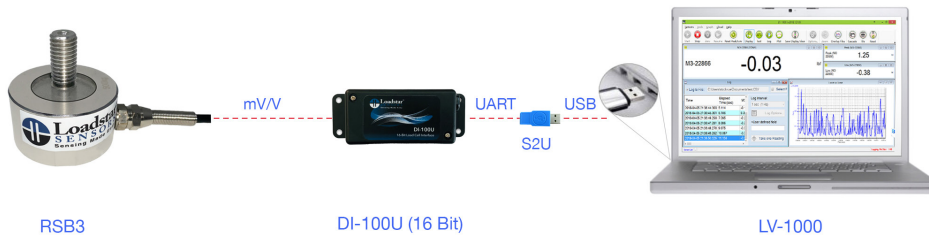
Self Leveling Foot

LF-M12-F

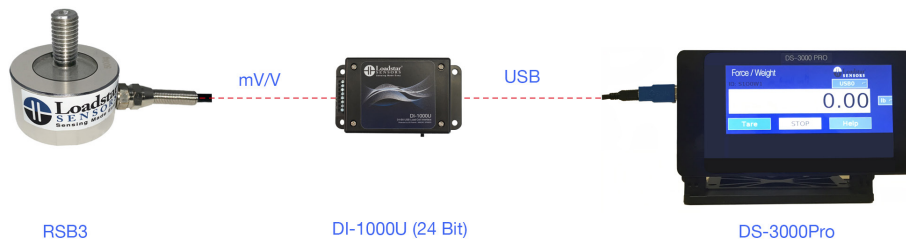
### Wireless Load Cell Configuration



### USB Load Cell Configuration



### Load Cell with LED Display



### Analog Load Cell Configuration

