



Creality is a global leading brand in 3D printing industry. Established in 2014, focusing on the design, research, production of 3D printers and 3D printing related products. Creality Ecosystem, as one of the division of Creality. We aim to build a powerful 3D printing ecosystem and a DIY platform based on the needs of our users. In Creality Ecosystem, you can experience complete 3D printing solutions and really enjoy the fun of 3D printing. Creality Ecosystem provides not only 3D scanner, laser engraving machine, 3D printing accessory, filament & resin, but also peripheral products, providing you with a more DIY experience.

CREALITY

Laser Engraver

CR-Laser Falcon

Engrave a Masterpiece

Why Choose CR-Laser Falcon?

- CR-Laser Falcon is a creative device for DIYers, makers. It hits the sweet spot between affordability, ease-of-use, and capability.
- By adopting poly-lens spot compressed laser technology, it realizes high precise cutting and engraving up to 0.1mm.
- With the advantages of quick focusing, accurate positioning and one-button controlling, it is friendly for the new to the world of engraving and cutting.
- It is also safe for human health with smoke and dust filtration and FDA Class 1 safety level protective cover.



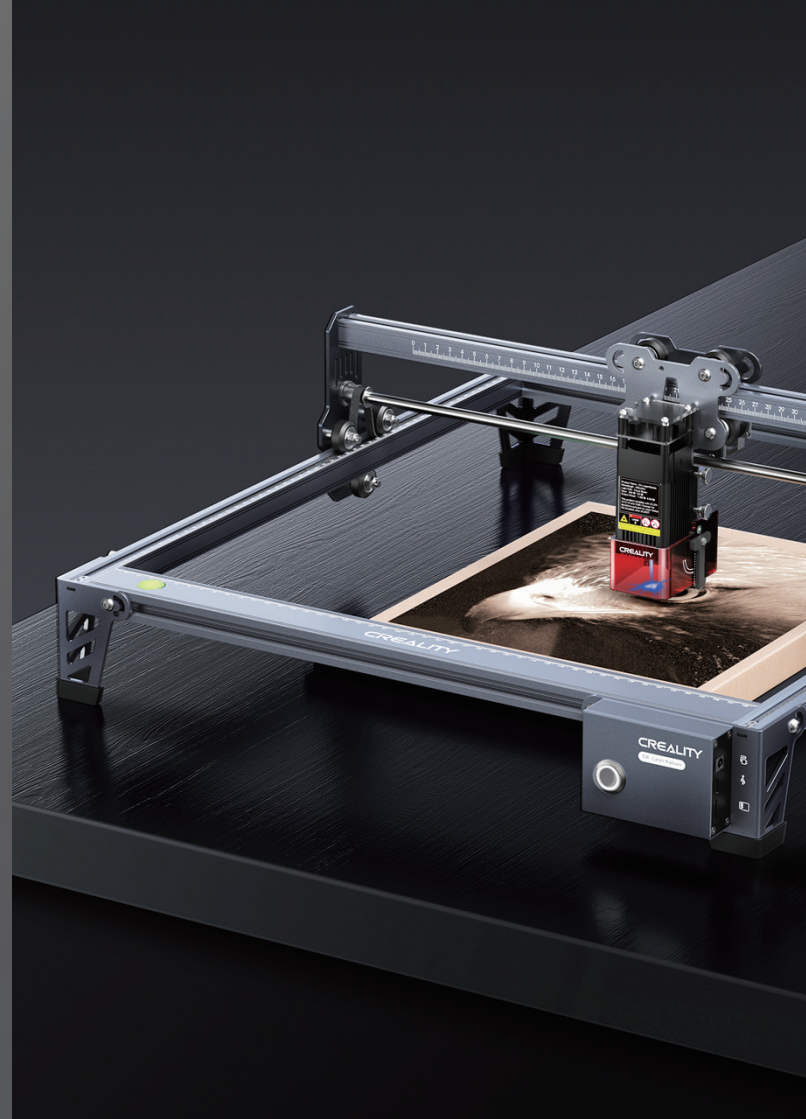
Precise Cutting
& Engraving



Quick
Focusing



Accurate
Positioning



Application

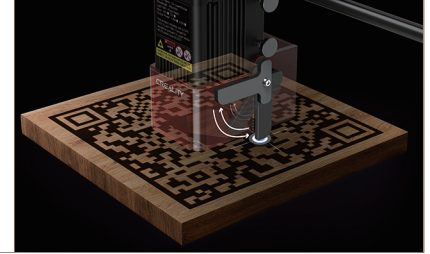
Engraving and Cutting Master

Remarkable Improvements realized by the poly-lens spot compressed laser technology: 6 times faster, up to 0.1mm accuracy, and extraordinary cutting ability to incise basswood veneer of 4-5 mm, two times thicker than the original 2 mm.



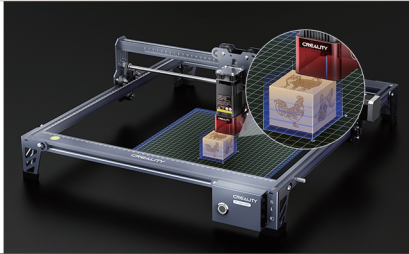
Quick Focusing

Time-saving and easy to handle. The focusing system is comprised of a fixed-focus lens and a focusing facilitator. Slide down the facilitator for fast focusing and uplift it once the focusing is finished.



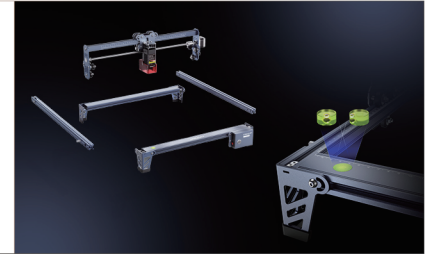
Always Spot-on

Quick and accurate starting point location. Continuous blue light emissions from the laser head will indicate the engraving area. For batch engraving, use the auxiliary grid plate for the same working area confirmation.



Better Condition for Creation

Anodized aluminum alloys, L-shape silicone footpads and an 8 mm steel rail ensure precision and smooth movement. A built-in leveler prevents from losing, and it is set for measuring whether the machine is properly placed.



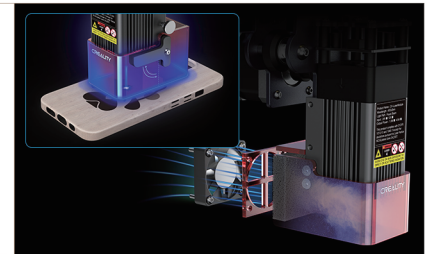
One-button Management

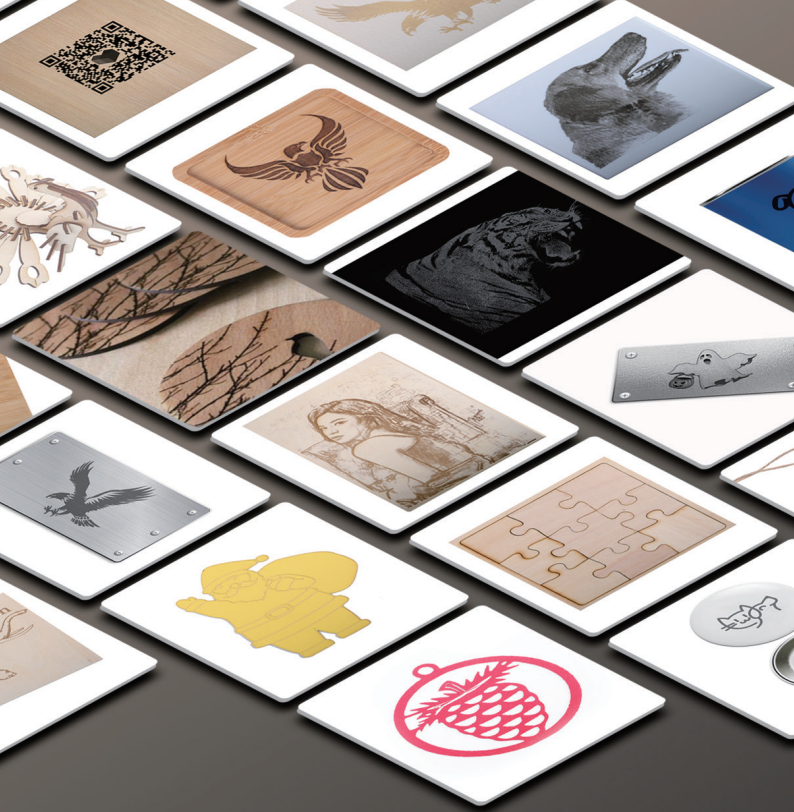
Press the glowing button to control working status, including preview, engrave/cut, pause and restart.



Safer & Healthier

The laser protective cover meets FDA Class 1 safety level and can filter 90% UV light, enabling users to observe without wearing goggles. The fan with washable cotton filter effectively absorbs the smoke and dust, protecting users' respiratory system and ensuring the engraving quality with an avoidance of object blackening.





Multiple Materials Support

Flexible materials: paper, cotton, leather, fabric
Materials of general hardness: wood, PVC, bamboo, acrylic, plastic.

Materials of high-hardness: matte stainless steel, metallic painted surface, anodized surface, electro-wing surface, dark metallic surface.

Product Specification

Spot Size	0.1 mm
Engraving Depth	0-3 mm
Cutting Thickness	0-5 mm
Laser Wavelength	450±5 nm
Optical Power	5 W、10 W
Engraving Precision	254 dpi
Engraving Speed	Max. 10000 mm/min
Engraving area	400*415 mm
Light Source	Semiconductor Laser
Input Voltage	100~220 V 47~63 Hz
Output Voltage	24 V DC
Slicing File Format	svg, png, jpg, jpeg, bmp, dxf
Slicing Software	CreatyLaser、LaserGRBL、LightBurn
Applicable Materials	cardboard, wood, bamboo clappers, rubber plate, leather, fabric, acrylic, plastic, metal
Engraving File Format	.gcode (after slicing)
Support OS	Windows/MacOS

Website:

Address:

Phone:

E-mail:

Wholesale Price: