

## Peak Emission Wavelength: 630nm

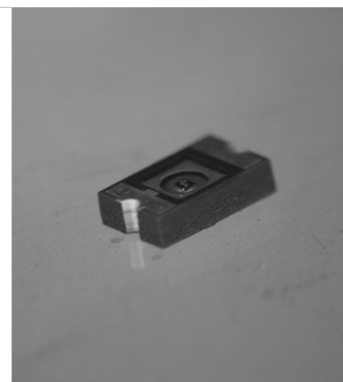
The 630nm Point Source Series is designed for applications requiring high accuracy and precision as well as uniform spectral emission. Custom package solutions and sorting are available.

### FEATURES

- > Red Color Point Source LED
- > Emitting Window Diameter  $\Phi$  25 $\mu$ m

### APPLICATIONS

- > Optical Switches



## Absolute Maximum Ratings (Ta=25°C)

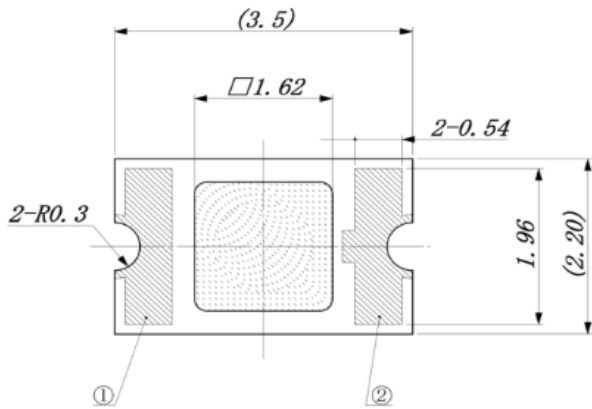


ITEMS	SYMBOL	RATINGS	UNIT
Forward Current (DC)	IF	15	mA
Forward Current (Pulse)*1	IFP	30	mA
Reverse Voltage	VR	5	V
Power Dissipation	PD	45	mW
Operating Temperature Range	Topr	-20 ~ +80	°C
Storage Temperature Range	Tstg	-30 ~ +100	°C
Lead Soldering Temperature	Tls	260	°C

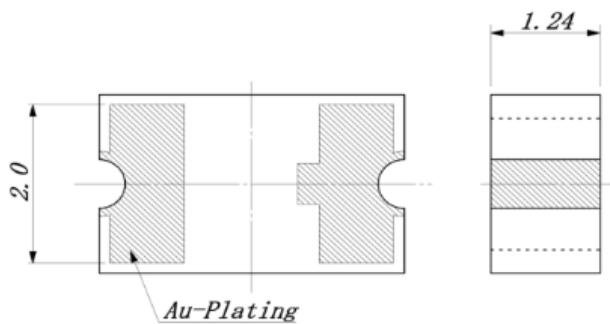
\*1: Tw=10 $\mu$ sec, T=10msec.

## Electrical & Optical Characteristics (Ta = 25°C)

ITEMS	SYMBOL	CONDITIONS	MIN	TYP	MAX	UNIT
Power Output	PO	IF=5mA	--	50.0	--	$\mu$ W
Forward Voltage	VF	IF=5mA	--	2.1	2.5	V
Reverse Current	IR	VR=5V	--	--	100	$\mu$ A
Peak Emission Wavelength	$\lambda_p$	IF=5mA	--	630	--	nm
Spectral Line Half Width	$\Delta\lambda$	IF=5mA	--	15	--	nm
Half Intensity Beam Angle	$\Theta$	IF=5mA	--	$\pm$ 45	--	deg



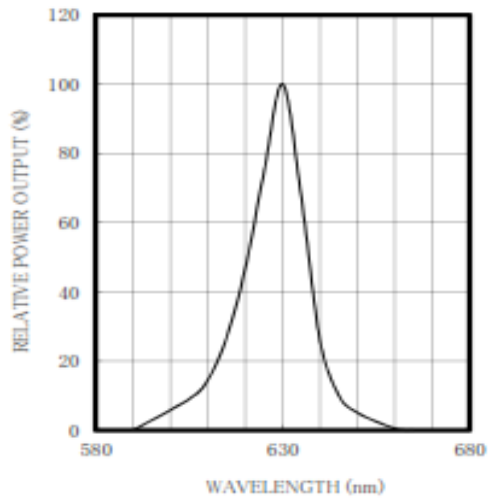
① Cathode      ② Anode



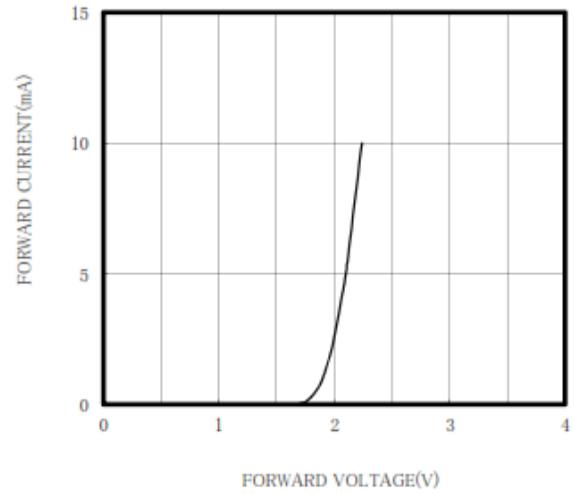
Unit: mm, Tolerance:  $\pm 0.2$

2016-12-15

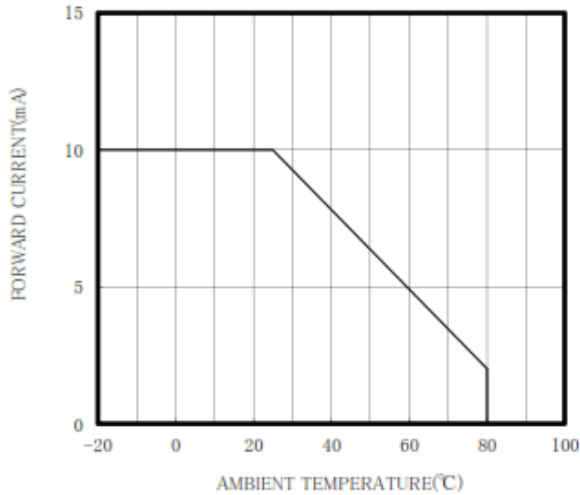
SPECTRAL OUTPUT



FORWARD I-V CHARACTERISTICS



THERMAL DERATING CURVE



RELATIVE POWER vs FORWARD CURRENT

