



### EMI/RFI Filter with very high attenuation for industrial applications

Datasheet 3/2019

#### APPROVALS:



UL1283  
CSA C22.2



**FIN3755.(007 – 180).M**

#### FEATURES

- Rated current from 7 to 280A
- Very high differential and common mode attenuation
- Excellent performance and value

#### BENEFITS

- 5 Year warranty
- Safety terminal block connector
- Extremely compact design



**FIN3755.280.B**

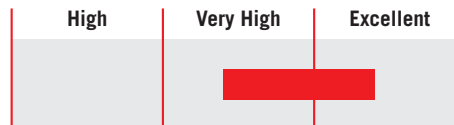
#### MARKETS

- Variable frequency drives / servo drives
- Automated machinery
- Packaging machinery
- HVAC systems

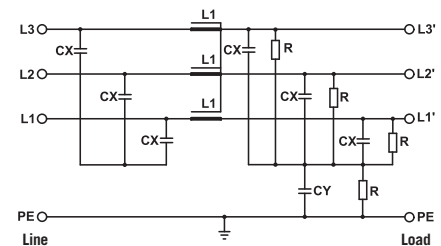
#### ORDERING CODE

FIN3755	.055	.M
Model	Current (A)	Connection
		M = Terminal block
		B = bus bar

#### ATTENUATION INDICATOR



#### ELECTRIC DIAGRAM



#### TECHNICAL SPECIFICATIONS

Nominal voltage	0 / 480 Vac
Frequency	50 – 60 Hz
Rated current	7 to 280A
Potential test voltage phase to phase	2200 Vdc (2 sec.)
Potential test voltage phase to ground	2900 Vdc (2 sec.)
Leakage current normal conditions	< 10 mA *
Leakage current worst conditions	< 80 mA
IP Protection	IP20 up to 180A IPO0 over 180A
Overload capability	4 x Rated current (Switch ON) 2 x In 10 seconds 1.5 In for 10 minutes
Climatic class	-40 / +85° C
MTBF at 40°C	250.000 Hrs

\* Voltage 230 Vac phase to ground 50 Hz / 40°C

### ELECTRICAL CHARACTERISTICS

FIN3755	Rated Current 40°C	Rated Current 50°C	Power Loss (W)
.007.M	8	7	3
.016.M	18	16	4
.030.M	32	30	11
.042.M	45	42	15
.055.M	58	55	19
.075.M	80	75	25
.100.M	105	100	42
.150.M	160	150	52
.180.M	190	180	61

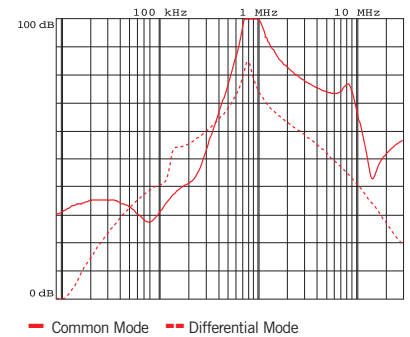
FIN3755	Rated Current 40°C	Rated Current 50°C	Power Loss (W)
.280.B	280	250	75

### CONNECTIONS

LINE			PE	
Solid Cable (mm <sup>2</sup> )	Stranded Cable (mm <sup>2</sup> )	Terminal Torque (Nm)	d (mm)	Torque (Nm)
0.2 - 4	0.2 - 4	0.5	M5	4
0.2 - 4	0.2 - 4	0.5	M5	4
0.2 - 10	0.2 - 6	1.2	M6	6
0.2 - 10	0.2 - 6	1.2	M6	6
0.5 - 16	0.5 - 10	1.8	M6	6
4 - 25	6 - 35	4.5	M6	6
4 - 25	6 - 35	4.5	M10	18
10 - 50	10 - 50	20	M10	18
35 - 95	35 - 95	20	M10	18

LINE		PE	
d (mm)	Torque (Nm)	d 1 (Nm)	Torque (Nm)
M8	14	M8	14

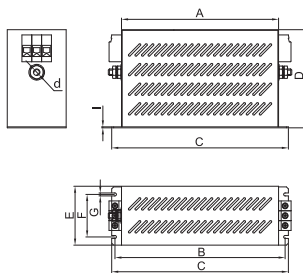
### TYPICAL ATTENUATION



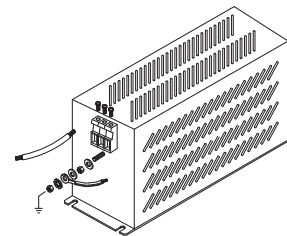
### MECHANICAL DIMENSIONS mm

FIN3755	A	B	C	D	E	F	G	d	I	Weight Kg.	Case
.007.M	160	180	190	78	48	20	4	M5	1	1.1	1
.016.M	220	235	250	85	48	25	5	M5	1	1.5	1
.030.M	240	255	270	85	50	30	5	M6	1	2.1	1
.042.M	280	295	310	85	50	30	5	M6	1	2.7	1
.055.M	220	235	250	100	90	60	5	M6	1	3.1	1
.075.M	240	255	270	135	85	60	5	M6	1.5	3.6	1
.100.M	240	255	270	155	90	65	6	M10	1.5	4.2	1
.150.M	300	315	330	156.5	90	65	6	M10	1.5	6	1
.180.M	350	365	380	170	125	102	6.5	M10	1.5	7.5	1

### CASE 1



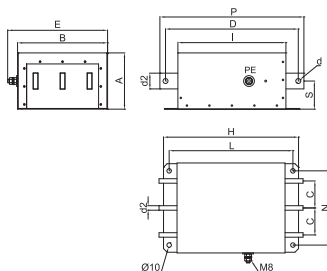
### ASSEMBLY CONNECTION "M"



### FIN3755

FIN3755	A	B	C	D	E	H	I	L	N	P	S	d	d2	Weight Kg.	Case
.280.B	86	200	60	300	277	300	240	275	165	320	37	9	20x6	5.2	2

### CASE 2



### ASSEMBLY CONNECTION "B"

