

**SPECIFICATIONS:**

**Materials:**

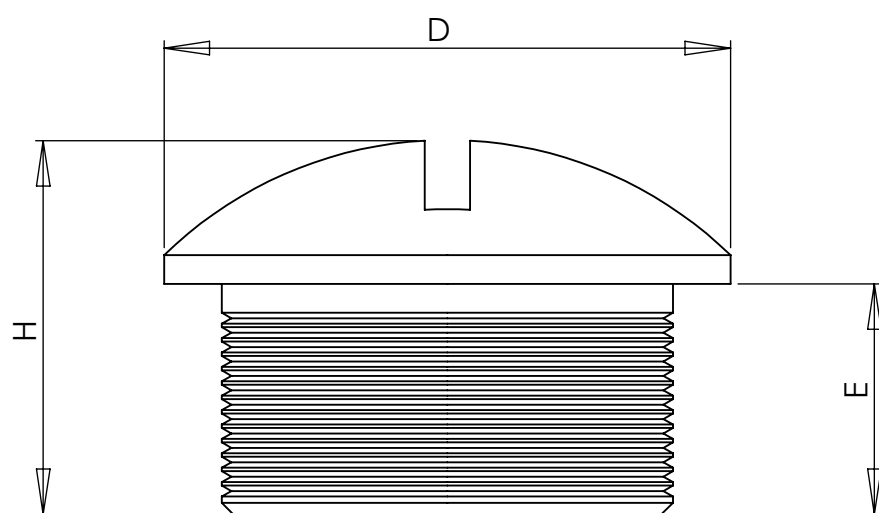
- Nylon or Nickel plated brass.
- Buna-N O-Ring seal optional.
- **For elevated temperatures, Nickel plated brass plugs with Viton® O-ring are available.**

**Operating Temperature:**

-40°F to 212°F (-40°C to 100°C)

**Add O-Ring or Seal Ring if Required, see Page 25 (Ordered Separately)**

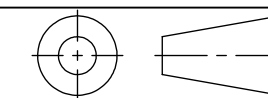
PART NUMBERS			THREAD TYPE AND SIZE For thread specs see page 29	DIMENSIONS INCHES (MM)				
Nylon Plugs		Brass Plugs		H Overall Height	Nylon		Brass	
Black	Gray				D Dome Diameter	E Thread Length	D Dome Diameter	E Thread Length
DM-12-BK DP-07-BK	DM-12-GY DP-07-GY	DM-12-BR DP-07-BR	M12 x 1.5 PG7 1/4"NPT	.39 (10) .31 (8.0)	.59 (15) .59 (15)	.24 (6) .24 (6)	.55 (14) .55 (14)	.37 (9.5) .20 (5)
DP-09-BK DM-16-BK	DP-09-GY DM-16-GY	DP-09-BR DM-16-BR	PG 9 M16 x 1.5	.35 (9.0) .45 (11.5)	.75 (19) .79 (20)	.24 (6) .27 (7)	.67 (17) .79 (20)	.24 (6) .20 (5)
DP-11-BK DM-20-BK	DP-11-GY DM-20-GY	DP-11-BR DM-20-BR	PG 11 M20 x 1.5	.35 (9.0) .51 (13.0)	.87 (22) .94 (24)	.24 (6) .27 (7)	.79 (20) .87 (22)	.24 (6) .24 (6)
DP-13-BK DP-16-BK	DP-13-GY DP-16-GY	DP-13-BR DP-16-BR	PG 13 PG 16	.37 (9.5) .37 (9.5)	.98 (25) 1.06 (27)	.24 (6) .24 (6)	.87 (22) .94 (24)	.26 (6.5) .26 (6.5)
DM-25-BK DP-21-BK	DM-25-GY DP-21-GY	DM-25-BR DP-21-BR	M25 x 1.5 PG 21	.61 (15.5) .43 (11.0)	1.18 (30) 1.30 (33)	.43 (11) .31 (8)	1.10 (28) 1.18 (30)	.27 (7) .27 (7)
DM-32-BK DP-29-BK	DM-32-GY DP-29-GY	DM-32-BR DP-29-BR	M32 x 1.5 PG 29	.63 (16.0) .47 (12.0)	1.50 (38) 1.73 (44)	.43 (11) .31 (8)	1.38 (35) 1.54 (39)	.31 (8) .31 (8)
DM-40-BK DP-36-BK	DM-40-GY DP-36-GY	DM-40-BR DP-36-BR	M40 x 1.5 PG 36	.71 (18.0) .59 (15.0)	1.81 (46) 2.16 (55)	.51 (13) .39 (10)	1.73 (44) 1.97 (50)	.51 (13) .35 (9)
DM-50-BK DP-42-BK	DM-50-GY DP-42-GY	DM-50-BR DP-42-BR	M50 x 1.5 PG 42	.73 (18.5) .63 (16.0)	2.20 (56) 2.44 (62)	.51 (13) .39 (10)	2.12 (54) 2.24 (57)	.35 (9) .39 (10)
DP-48-BK DM-63-BK	DP-48-GY DM-63-GY	DP-48-BR DM-63-BR	PG 48 M63 x 1.5	.63 (16.0) .75 (19.0)	2.72 (69) 2.72 (69)	.47 (12) .59 (15)	2.52 (64) 2.75 (70)	.39 (10) .39 (10)



**NOTES:**

- 1) GENERAL DIMENSIONS DRAWINGS.
- 2) DIMENSIONS [ ] ARE IN INCHES.
- 3) DIMENSIONS NOTED ARE FOR REFERENCE ONLY.

Third angle projection



14853 HINDSDALE AVE, SUITE D  
CENTENNIAL, CO 80112-4240, USA  
TEL: +1-303-699-1135  
TOLL FREE: +1-800-456-9012  
E MAIL: [info@sealconusa.com](mailto:info@sealconusa.com),  
WEBSITE: [www.sealconusa.com](http://www.sealconusa.com)

