

# FiberPlex™ Industrial Gigabit Managed PoE+ Switch

## Model FP2008E/AT



The FP2008E/AT is an industrial-grade, 10-port 10/100/1000 L2 Managed Power over Ethernet switch ideally suited for Industrial Ethernet communications over a moderate bandwidth Gigabit fiber trunk. Layer 2 management enables this switch to provide reliable redundant connectivity throughout your network.

### System Interface/Performance

- Supports auto MDI/MDI-X function
- 10 ports include 8 10/100/1000TX RJ45 IEEE802.3at/af (30W) compliant ports and 2 100/1000 SFP cages
- Network redundancy features:
  - Spanning Tree: RSTP/MSTP
  - Ring Protection: G.8032 ERPS
- Traffic prioritization features:
  - IEEE802.1Q VLAN
  - IEEE802.1p; CoS/ToS
- IGMPv1/v2 up to 256 groups
- 8K MAC address table
- 9.6K Jumbo frame supports
- ESD protection: 6,000 VDC

### Power Input

- Redundant power input design: 48–55 VDC
- Built-in relay output for power failure detection
- PoE+ Ping Alarm for PoE+ port power cycling
- Surge protection: 2,000 VDC support

### Extended Operating Temperature

- -40 to 167°F (-40 to 75°C)

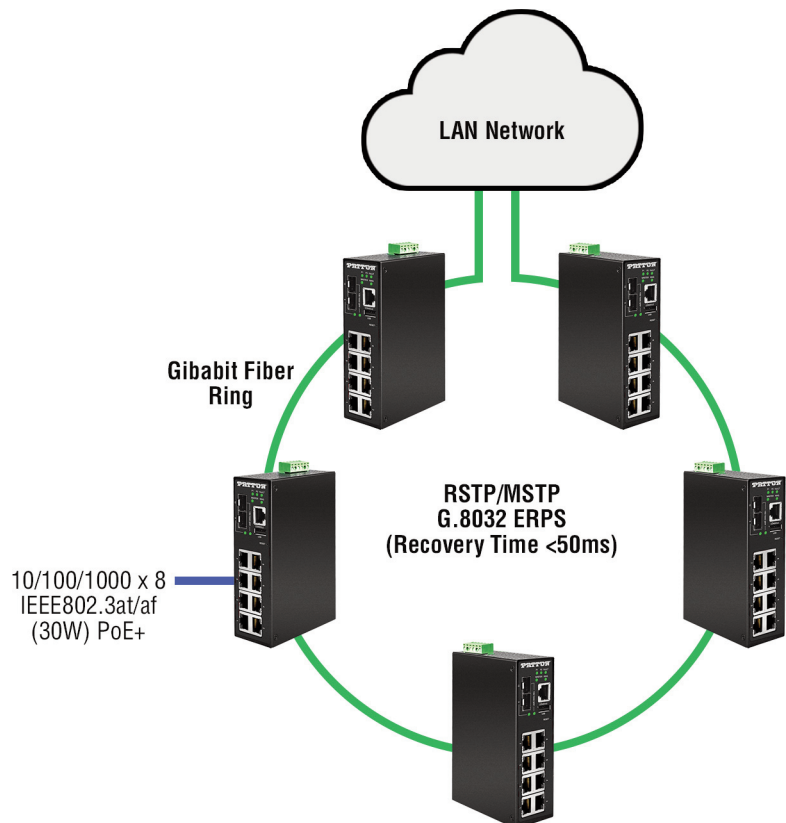
### Case/Installation

- IP30 rugged metal case
- DIN-rail and wall mount support

Patton's FP2008E/AT Managed Industrial Gigabit Power Over Ethernet Switch supports industrial applications requiring high bandwidth or high density connections. The FP2008E/AT is a fully manageable Layer 2 PoE+ switch, pre-loaded with a user-friendly web management console design. Ring network redundancy is provided by MSTP/RSTP and open standard ITU-T G.8032 ERPS (Ethernet Ring Protection Switch) protocol which has a < 50ms network recovery time. Advanced L2 network filtering and prioritization include IGMP, VLAN, QoS/CoS/ToS. Efficient monitoring and security can be achieved through SNMPv1/v2/v3, RMON, port mirroring, 802.1x, HTTPS, SSH/SSL.

The FP2008E/AT is housed in a sturdy IP30-rated DIN-rail enclosure with wall mount options. The physical layer interfaces include 8 x RJ45 10/100/1000 Ethernet ports, capable of providing up to 30W of PoE+ to PoE+ enabled end-points and two Gigabit SFP+ slots that can be used for fiber trunk connections. To ensure operation in harsh environments, the FP2008E/AT provides additional EFT and ESD protection that prevents unregulated voltage or harmful transients, and has an operating temperature rating of -40 to 167°F (-40 to 75°C).

Visit [patton.com/](http://patton.com/) for more information.



# FP2008E/AT Industrial Gigabit Managed PoE+ Switch

## Specifications

### Copper Ethernet (PoE+) Port

8 x RJ45 10/100/1000 (PSE: 30W/port) auto MDI/MDI-X

### Fiber Ethernet Port

2 x GigE SFP cages  
Wavelength: Refer to [patton.com/SFP-OC](http://patton.com/SFP-OC)

### RS232 Console Port

1 x RJ45, 115.2kbps, 8, N, 1

### USB2.0 Port

Configuration Backup

### Switching Properties

Backplane (Switching Fabric): 10 Gbps  
Processing Type: Store and Forward  
Transfer Rate:

- 14,880pps for 10Base-T Ethernet
- 148,800pps for 100Base-T Fast Ethernet
- 1,488,000pps for Gigabit Ethernet

Jumbo Frame: 9.6 Kbytes

MAC Table Size: 8K

Packet Buffer: 4 Mbits

VLAN Group: 1-4,094

IGMP Group: Up to 256 groups

### Networking Standards

IEEE 802.3 10Tx Ethernet

IEEE 802.3u 100Tx Fast Ethernet

IEEE 802.3ab 1000Tx Gigabit Ethernet

IEEE 802.3z Gigabit Fiber

IEEE 802.3x Flow Control for Full Duplex

IEEE 802.3ad for Port Trunk with LACP

IEEE 802.1d STP (Spanning Tree Protocol)

IEEE 802.1w RSTP (Rapid Spanning Tree Protocol)

IEEE 802.1s MSTP (Multiple Spanning Tree Protocol)

ITU-T G.8032/Y.1344 ERPS (Ethernet Ring Protection Switch) Protocol

IEEE 802.1Q for VLAN Tagging

IEEE 802.1x for Network Authentication

IEEE 802.1p QoS/CoS Protocol for Traffic Prioritization

### Additional Standards

IGMPv1/v2, SNMPv1/v2c/v3, TFTP, SNMP, SMTP, RMON, HTTP, HTTPS, Telnet, Syslog,

DHCP Option 66/67/82, SSH/SSL, Modbus/TCP, LLDP, IPv4/IPv6

### Power

Power Consumption:

- 215 Watts @ 48 VDC
- 255 Watts @ 51-55 VDC

PoE+ Power Output:

- 25 Watts @ 48 VDC
- 30 Watts @ 51-55 VDC

Input Voltage: 48-55 VDC

Redundant Input (with 1 removable 6-contact terminal block) 100-240 VAC adapter (optional)

### Protection

Reverse Polarity  
Overload Current  
CPU Watchdog

### Temperature

Operating: -40 to 167°F (-40 to 75°C)

Storage: -40 to 185°F (-40 to 85°C)

### Ambient Relative Humidity

5 to 95%, (non-condensing)

### Housing

Metal, IP30 protection, DIN-Rail Mounting (wall mounting bracket is also included)

### Dimensions

2.12W x 3.89D x 5.59H in.  
(54W x 99D x 142H mm)

### Weight

Unit Weight: 2.5 lbs (1.13 kg)  
Shipping Weight: 3.0 lbs (1.36 kg)

### Certifications

FCC, CE, UL 61010-1  
UL 61010-2-201 Class 1 Div 2

### EMI

FCC Class A

### EMS

IEC61000-4-2, 4-3, 4-4, 4-5, 4-6, 4-8  
IEC61000-6-2, 6-4

### Free fall / Shock / Vibration

IEC60068-2-32 / IEC60068-2-27 / IEC60068-2-6



Specifications subject to change without notice



**Patton Electronics Co.**  
7622 Rickenbacker Drive  
Gaithersburg, Maryland 20879, USA  
Phone +1 301 975 1000  
Fax +1 301 869 9293  
E-mail [sales@patton.com](mailto:sales@patton.com)  
Web [www.patton.com](http://www.patton.com)

**Patton-Inalp Networks AG**  
Meriedweg 7  
CH-3172 Niederwangen, Switzerland  
Phone +41 (31) 985 25 25  
Fax +41 (31) 985 25 26  
E-mail [we@patton.com](mailto:we@patton.com)  
Web [www.patton.com](http://www.patton.com)

**Patton Hungary Zrt**  
Gábor Dénes utca 4., Infopark Building C  
Budapest H-1117, Hungary  
Phone +36 1 439 4840  
Fax +36 1 439 4844  
E-mail [ce@patton.com](mailto:ce@patton.com)  
Web [www.patton.com](http://www.patton.com)